

Products:

- Suma PolyWash L56R
- Suma PolyDry A9

Safety

The products referenced in this method card may represent a hazard. Please consult the appropriate Material Safety Data Sheet for details.

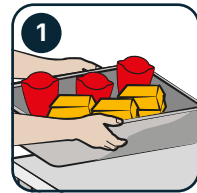
Recommendations:

- Please consult the appropriate Safety Data Sheet for details.



Method Card

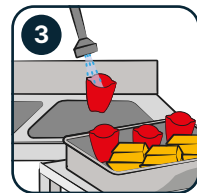
How to wash reusable ware with Diversey McD Daily ReUsable program



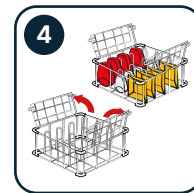
Remove the collection bin from the sorting station and place it on a cart for transport.



Wipe spills from the sorting station with McD DR and a sanitizer-soaked towel. Replace with a clean bin.



Transport the soiled bin to the three-compartment sink to pre-rinse the wares. **IMPORTANT: Remove any pick lists, stickers, or labels.**



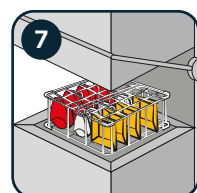
Load pre-scraped wares into a Re-Use Dishrack, lifting the wire cover as needed.



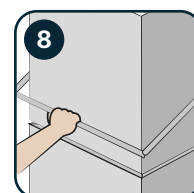
Ensure items are properly racked (e.g., cups upside down, clamshells angled at 45°).



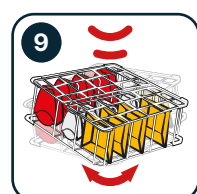
Run the rack through the dishmachine when full, ensuring wares are organized and not nested.



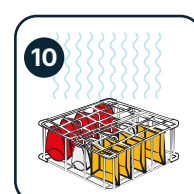
Close the wire lid and load the rack into the dishmachine.



Run the dishmachine, letting it complete the full cycle before opening.



Remove the rack, tilt it, and tap it on the dish table to shake off excess water.



Let wares dry completely before restocking.